

501 and 501R

50kHz to 200kHz

Both the 501 and 501R are thru-hull transducers for commercial use. The Model 501R is an optional shape that is round with a diameter of 2 3/4". A heavy duty cable is furnished with both.

When combined with its streamlined fairing block, this combination is tough to beat.

Options:

- Temperature sensor
- Fairing block, FB501
- Custom element configurations
- Impedance matching

Applications:

- Fiberglass or wood hulls only.

Specifications:

- Housing and nut material: Cast Bronze.
- Threads: 1 1/16" - 3/4" N.P.S.
- Standard cable length: 30 feet.
- Weight: Bronze – 10 lbs.
- Cable – Heavy duty, 30' standard.



Model 501 and 501R

Performance Data

FREQUENCY (kHz)	BEAM WIDTH (degrees @ -3db)	ELEMENT SIZE (inches)	CAPACITANCE (pf)	IMPEDANCE (ohms)	TRANSMIT RESPONSE (db)	RECEIVE RESPONSE (-db)	POWER RATING, RMS (watts)	COMMENT
			NOTE (1)	NOTE (2)	NOTE (3)	NOTE (4)		
200	9	2.0	2185	385	165	-186	600	
50	36	2.3	8500	180	165	-180	600	
40	42	2.1	1800	850	162	-179	700	

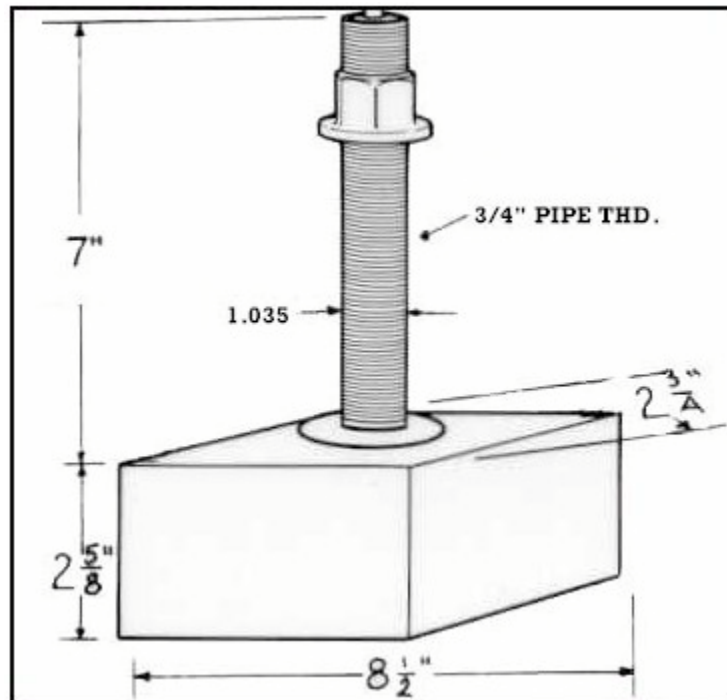
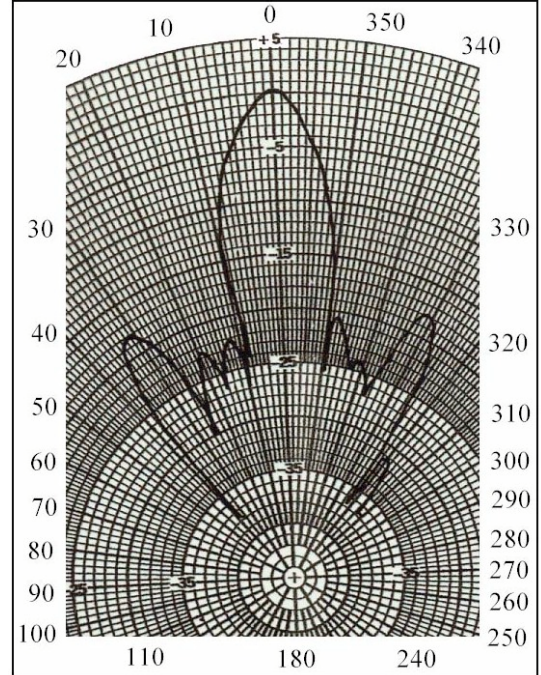
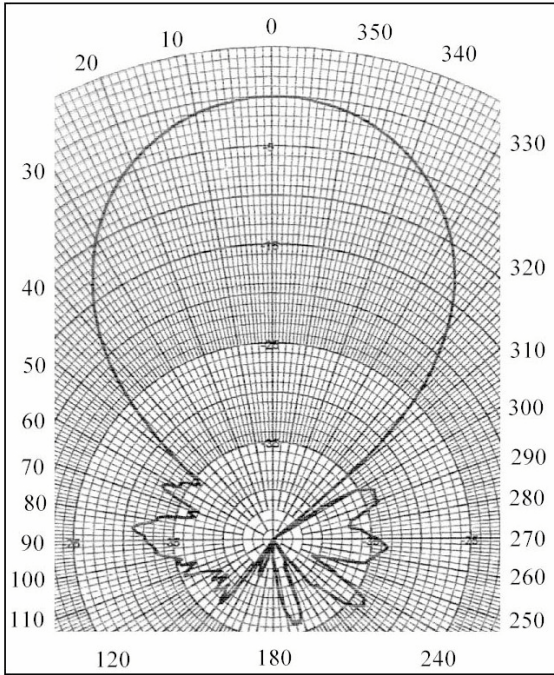
(1) with standard length cable. (2) equivalent series R in water. (3) the source level generated by one watt input. (4) the open circuit RMS voltage generated by a pressure of one microbar.

MODEL 501

50Khz Mode – 2.3” Diameter Elements

SPECIFICATION SHEET

200Khz Mode – 2.0” Diameter Elements



Model 501 – Dimensional Data Not to Scale.