

408B, 408P

Fixed

50kHz to 200kHz

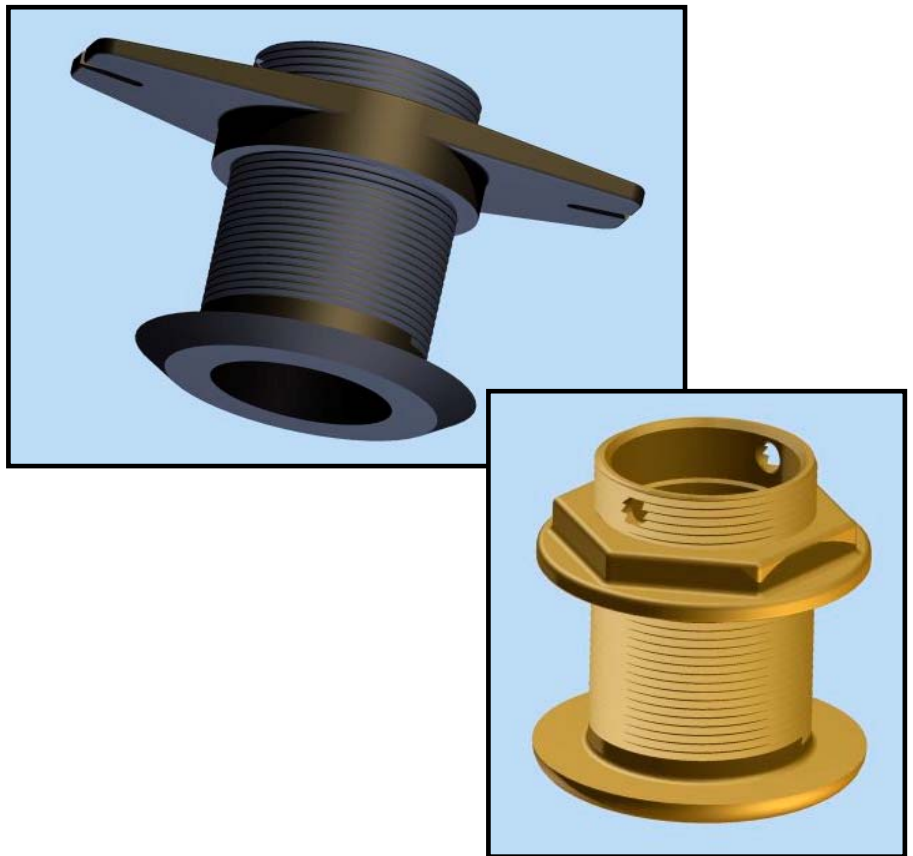
These low profile thru-hull fittings offer all the benefits of the retractable versions of the 408P and 408B with the exception that the transducer insert is fixed within the housing and cannot be removed. The fixed versions can accept up to a 1.7" diameter, dual frequency element.

Options:

- Temperature sensor
- Custom element configurations
- Choice of housing material:
Glass filled Nylon or Bronze.

Applications:

- 408B - Fiberglass or wood hulls only.
- 408P – Not for use in wood hulls.

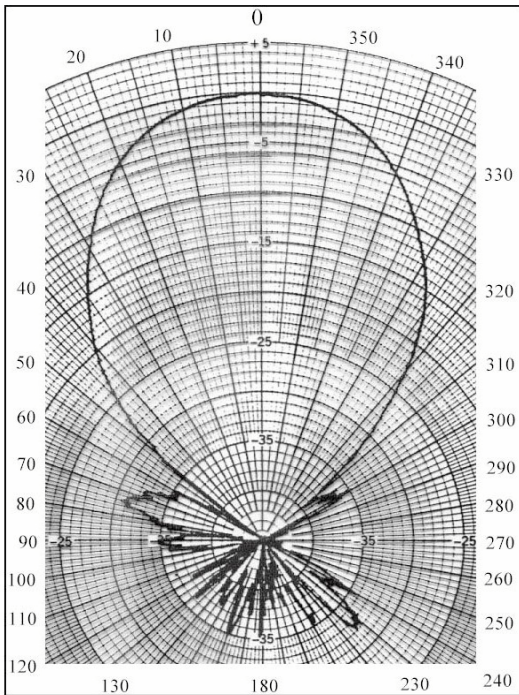


Performance Data

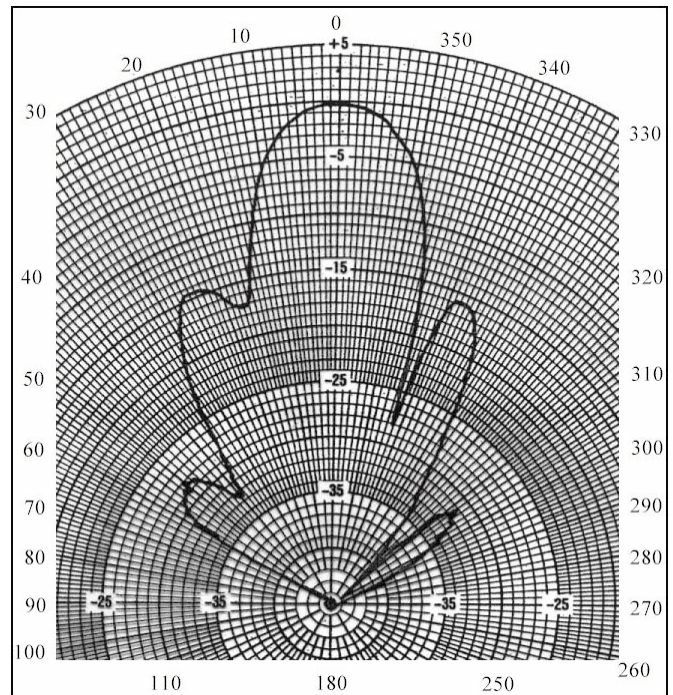
FREQUENCY (kHz)	BEAM WIDTH (degrees @ -3db)	ELEMENT SIZE (inches)	CAPACITANCE (pf) NOTE (1)	IMPEDANCE (ohms) NOTE (2)	TRANSMIT RESPONSE (db) NOTE (3)	RECEIVE RESPONSE (-db) NOTE (4)	POWER RATING, RMS (watts)	COMMENT
200	12	1.45	1265	480	161	-182	300	
200	18	1.1	965	550	157	-189	300	
200	11	1.7	1900	300	163	-185	600	Dual frequency, 50/200 kHz
160	20	1.1	885	750	158	-189	300	
120	38	1.0	1050	500	167	-181	300	
50	45	1.7	1600	440	156	-173	600	Dual frequency, 50/200kHz

(1) with standard length cable. (2) equivalent series R in water. (3) the source level generated by one watt input. (4) the open circuit RMS voltage generated by a pressure of one microbar.

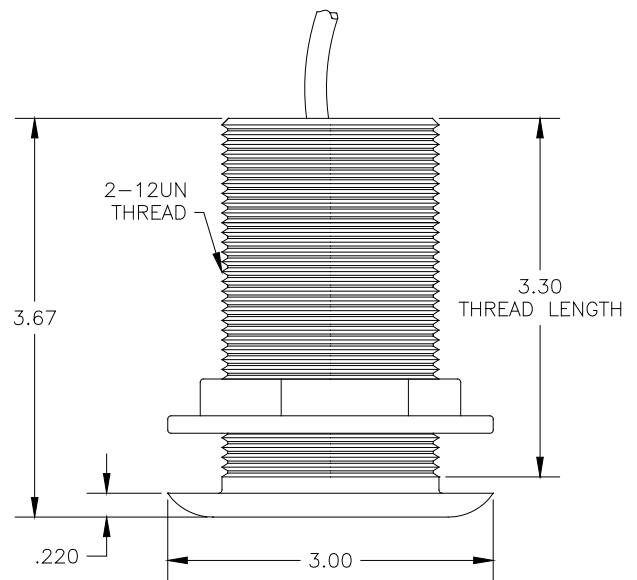
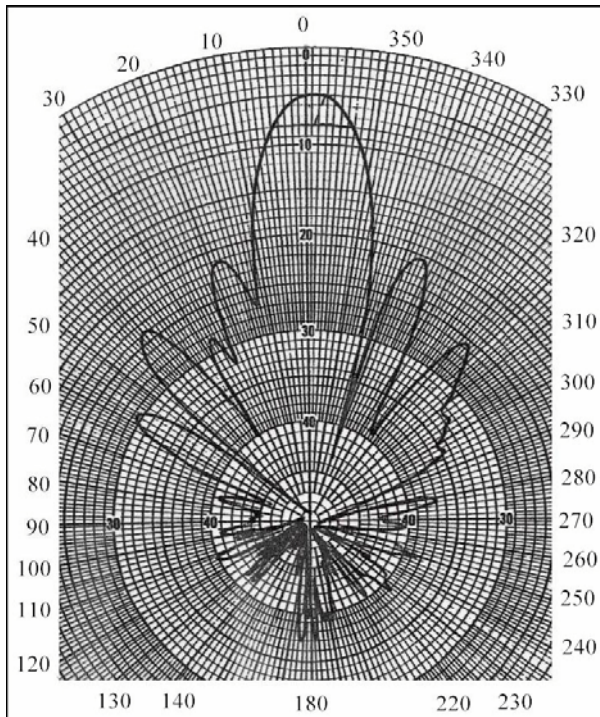
120 kHz Mode – 1” Diameter Element



200Khz – 1.1” Diameter Element



200kHz – 1.45 Diameter Element



408B Fixed – 408P dimensionally similar.