

Thru-Hull, Multi-functional ■ Recreational ■ Commercial

Models 400B, 402B and 403B

The 400 series of bronze thru-hull transducers provide readings on depth, boat speed and surface water temperature in a single unit.

The Model 400 is designed for a single element for the depth function and is available in several frequencies and beam widths including dual frequency and dual beam width.



Model 400 – Short Stem, 3.75"

The Model 402 has a longer body and will accommodate two elements of different frequencies or two elements of the same frequency.



Model 402 – Will accommodate two elements.

Both models offer a standard stem length of 3.75" or a long stem of 6" for thicker hulls. A precut fairing/leveling block is also available to facilitate installation.



Model 400 – Showing 3.75" and 6" stem lengths.



Model 400 Fairing Block

A feature of these models is the use of a two cable system out of the transducer. One cable is for the speed/temperature module and the other for the depth element. This design provides for easy replacement of the speed/temperature module should a failure occur. The short cables have waterproof connectors and attach to the mating plugs on the main cable to the sounder.

Furthermore, by the use of two stems, a more secure attachment to the hull is assured and the fore & aft alignment is maintained should the transducer be struck by a submerged object.

The retractable speed/temperature module has double O-ring seals and a blank plug is provided for when the module is removed for cleaning or inspection.

Upgrade notice: The multi-functional 400 series can now be upgraded with the new ACTIVE TRANSDUCER insert from the AT408 series. The speed over water function will be lost, but this may not be to serious if the vessel has on board GPS.

Options:

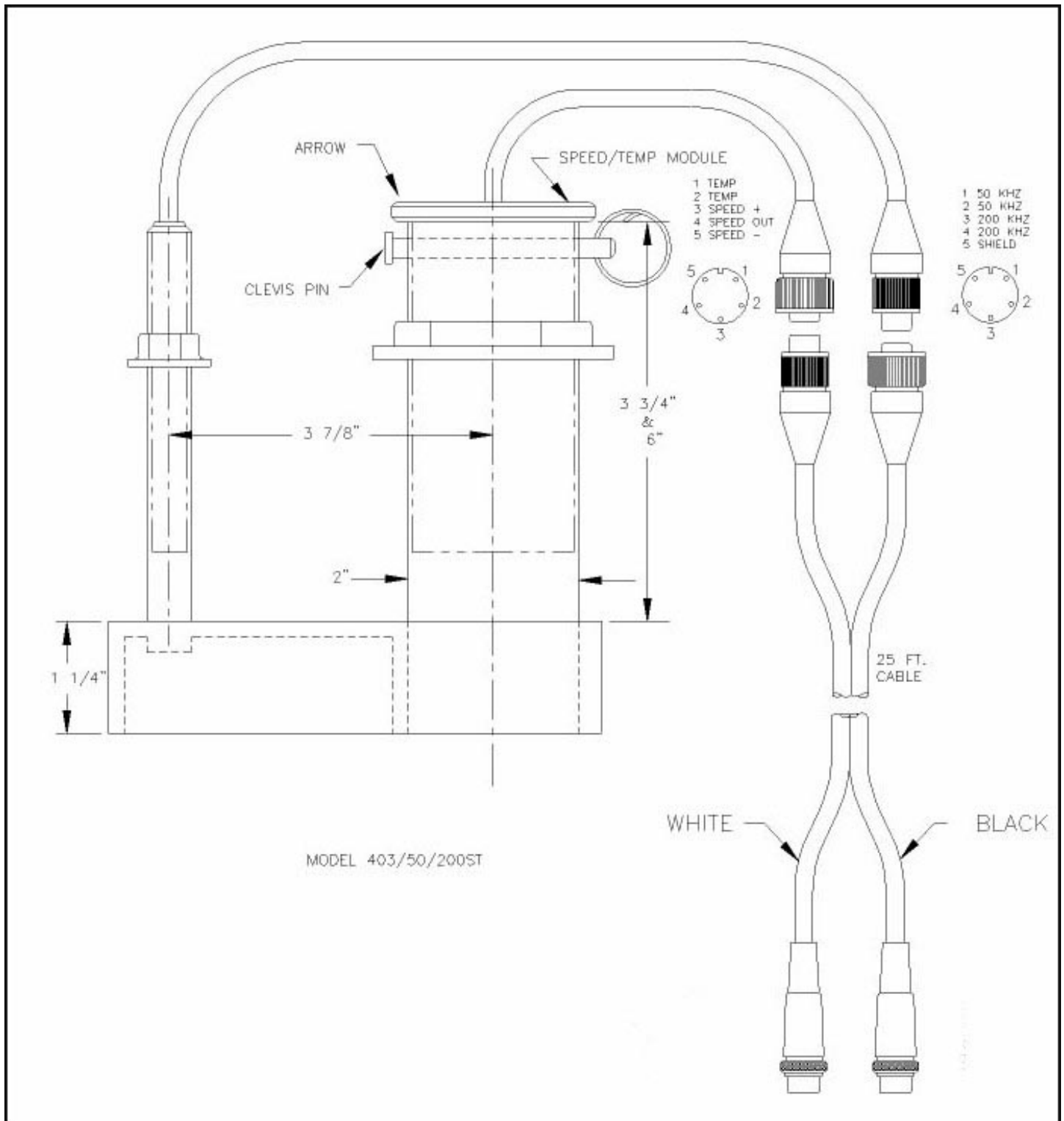
- Custom element configurations.
- Fairing Block FB400.
- Impedance matching.
- Connector boot.
- DSP depth sounder.

Applications:

- Fiberglass or wood hulls only.
- Not for use on Aluminum hulls.

Specifications:

- Speed Sensor
 - Linearity is plus/minus 3% over speed range.
 - 3 pulses per revolution or 22,500 pulses per nautical mile.
- Temperature
 - Type: Thermistor.
 - Value: 10k ohms at 25C.
- Weight: varies depending on configuration.
- Housing Material: Bronze.
- Nut material: Large nut, Bronze. Small nut is Nylon.



Model 403 – Showing dual cable configuration

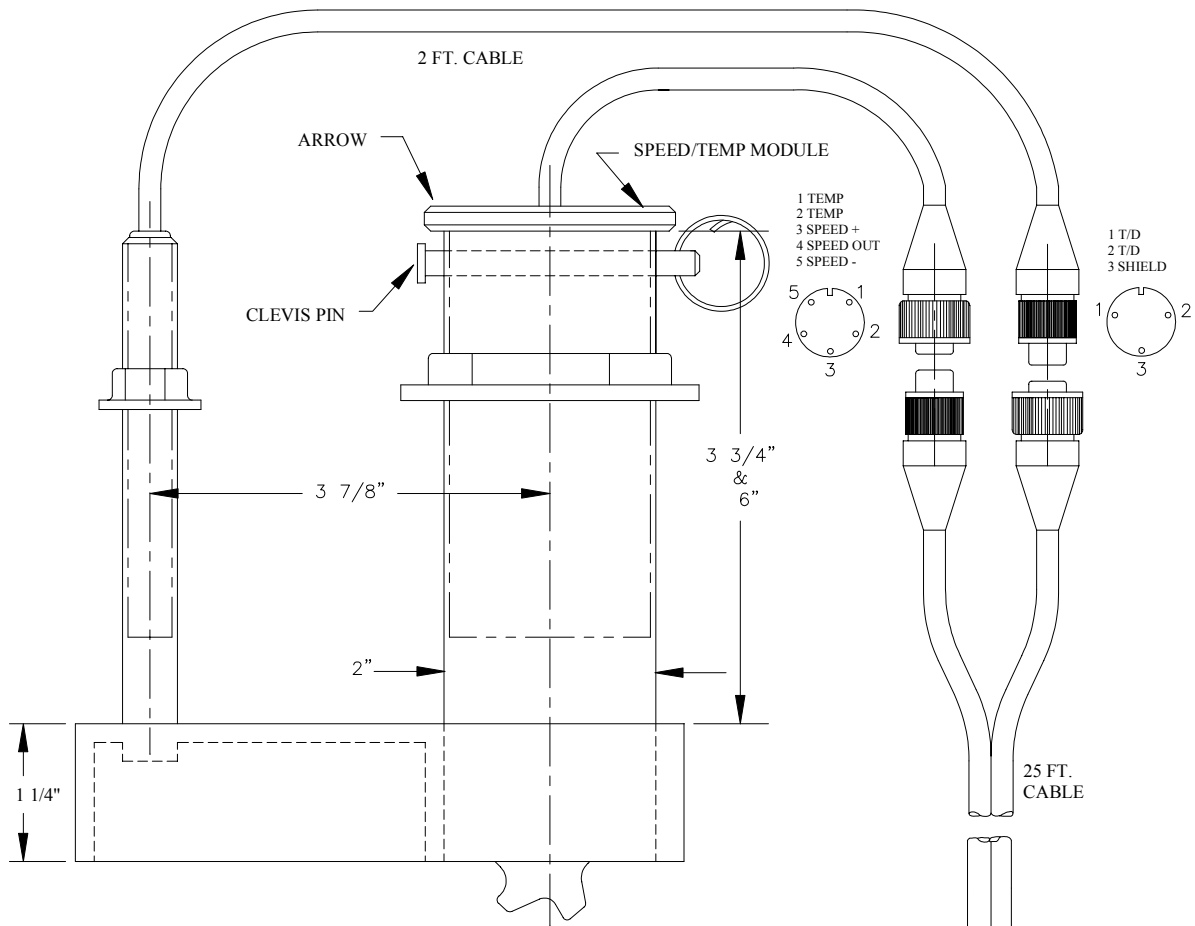
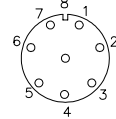


FIGURE 2
NOT TO SCALE
MODEL 400 AND 500

- GREEN 1 SPEED SINGLE
- RED 2 SPEED +VOLT
- BLUE 3 TRANSDUCER
- BARE 4 SHIELD
- BLACK 5 TRANSDUCER
- BROWN 6 TEMP
- WHITE 7 TEMP
- BARE 8 SPEED -VOLT

- GREEN 1 SPEED SIGNAL
- RED 2 SPEED +VOLT
- BLUE 3 NARROW BEAM
- YELLOW 4 WIDE BEAM
- BLACK 5 XDUCER COMMON
- BROWN 6 TEMPERATURE
- WHITE 7 TEMPERATURE
- BARE 8 SPEED -VOLT



Model 400 – Showing single ended cable.