

310 and 310R

50 kHz to 75 kHz

Both the Model 310 and 310R transducers are designed for the same elements as Model 301 but offer alternative shapes. Model 310R is round with a diameter of 2 3/4". Both models have housing made of cast bronze material.

When combined with its streamlined fairing block, this combination is tough to beat.

Options:

- Temperature sensor.
- Fairing block, FB310.
- Impedance matching.
- Connector boots.

Applications:

- Fiberglass or wood hulls only.

Specifications:

- Housing and nut material: Cast Bronze.
- Threads: .84- 1/2" N.P.S.
- Standard cable length: 30 feet.
- Weight: Bronze – 4 lbs.
- Cable – Heavy duty, 30' standard.



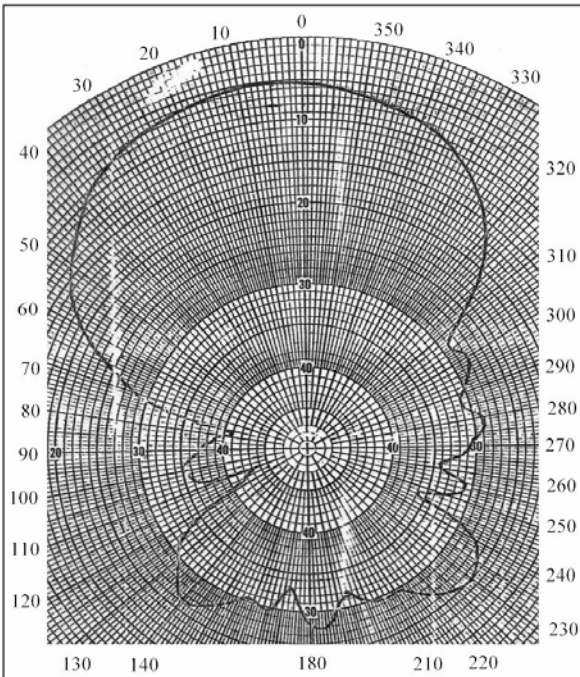
Model 310 and 310R

Performance Data

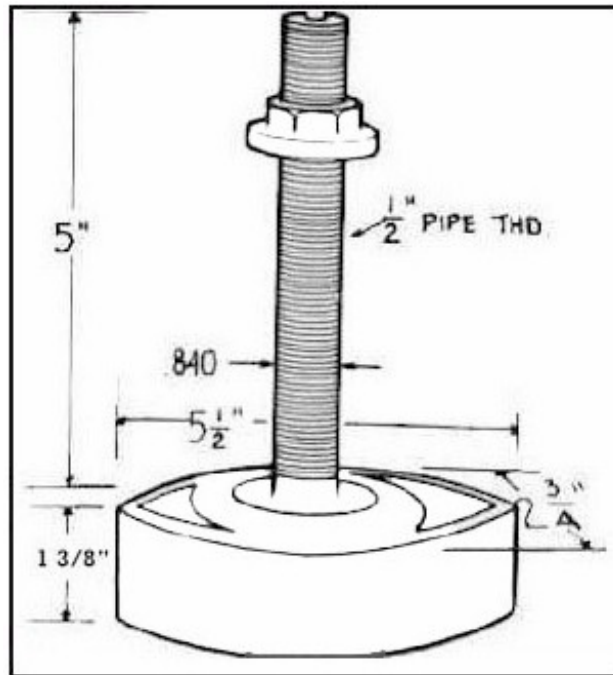
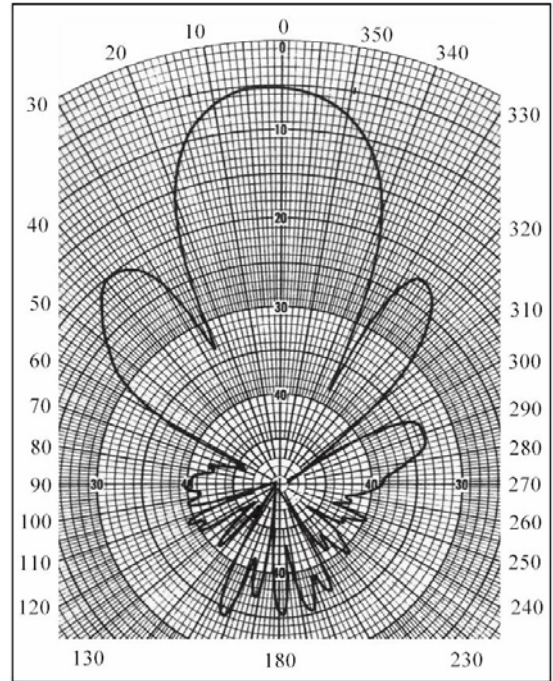
FREQUENCY (kHz)	BEAM WIDTH (degrees @ -3db)	ELEMENT SIZE (inches)	CAPACITANCE (pf)	IMPEDANCE (ohms)	TRANSMIT RESPONSE (db)	RECEIVE RESPONSE (-db)	POWER RATING, RMS (watts)	COMMENT
			NOTE (1)	NOTE (2)	NOTE (3)	NOTE (4)		
75	29	1.7	4200	200	160	-184	600	
50	43	2.0	4550	265	173	-184	600	

(1) with standard length cable. (2) equivalent series R in water. (3) the source level generated by one watt input. (4) the open circuit RMS voltage generated by a pressure of one microbar.

50 Khz Mode – 2.0” Diameter Elements



75 Khz Mode – 1.7” Diameter Elements



Model 310 – Dimensional Data Not to Scale.